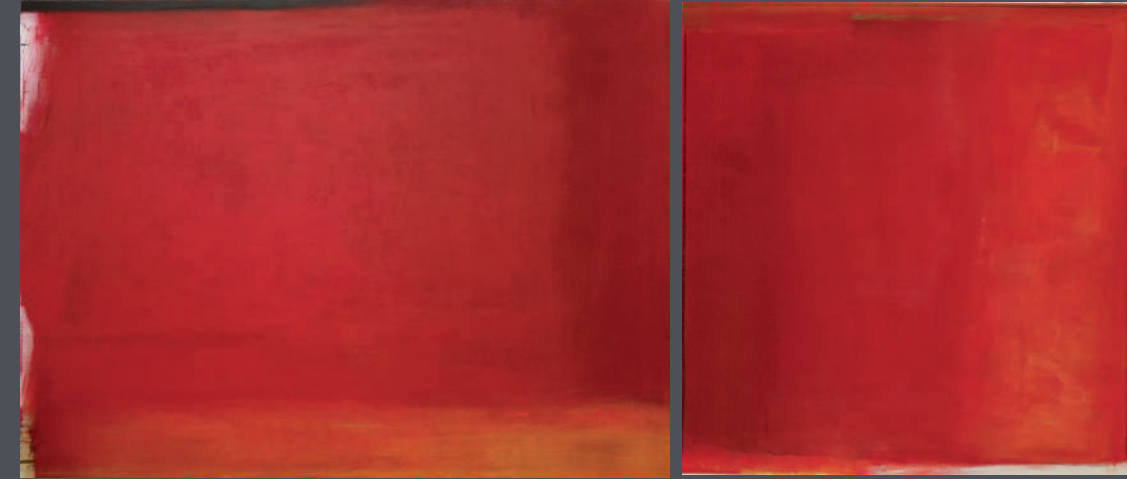




dialogando 19 / neroterra 1, je 111x151



nota rossa 2, 111x151 / contenuto rosso 10, 111x111



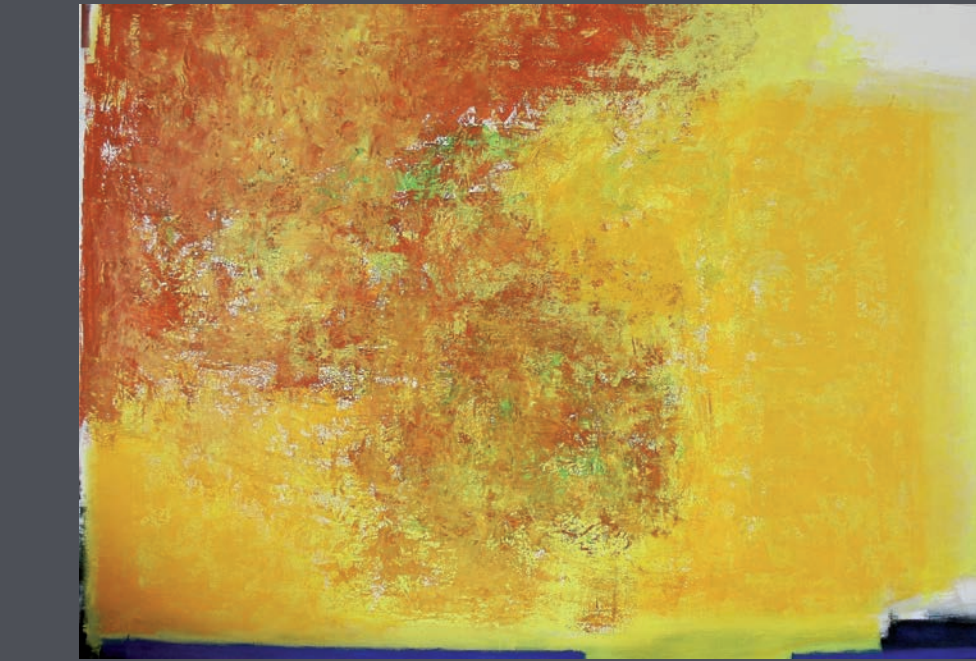
casale nuovo 2, 152x142



rossoverde su umbra 1, 164x221



dialogando 36, 140x230



settimo approccio, 198x298



arnaldo ricciardi 2011 i grandi





ottavo approccio, 180x200



carezza 1, 180x200



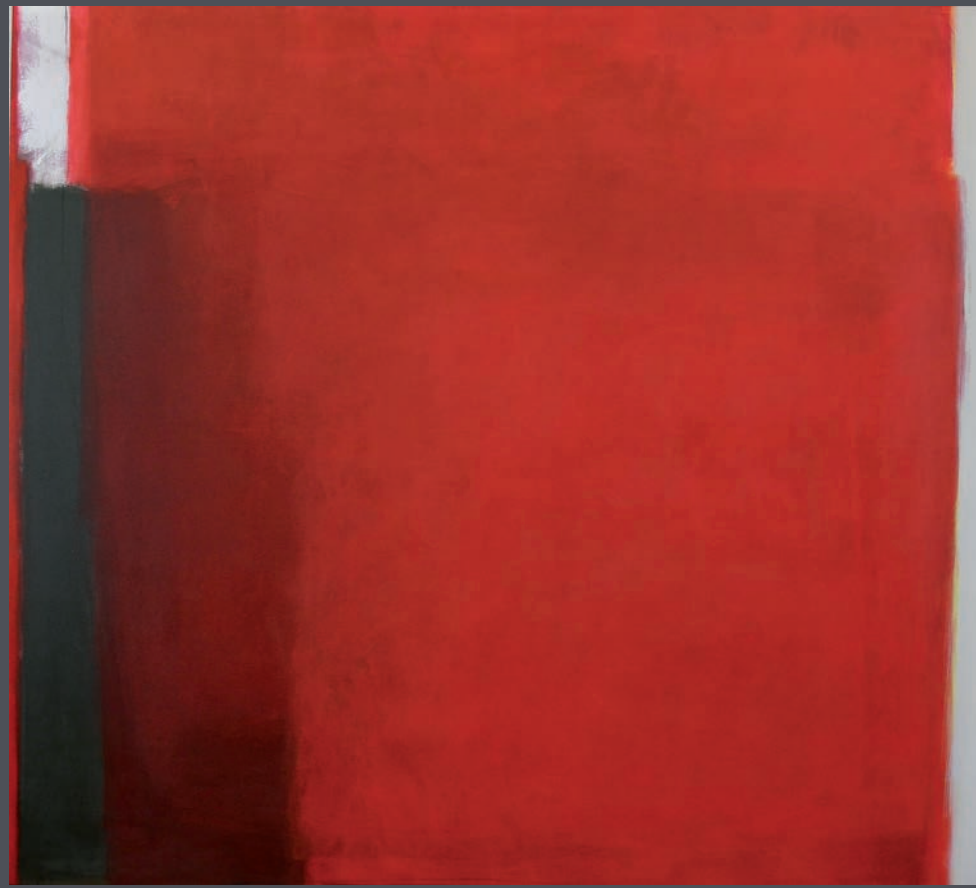
recipiente 1, 180x200



evasione 2, 180x200



giallo su bianco 1, 200x180



dialogando 2, 180x200



ein bild lebt durch die gesellschaft eines sensiblen betrachters,  
in dessen bewusstsein es sich entfaltet und wächst

mark rothko, 1947

arnaldo.ch